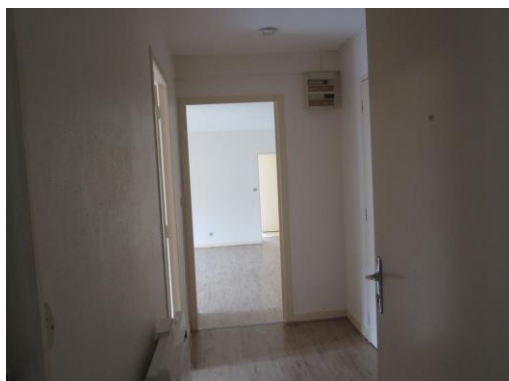
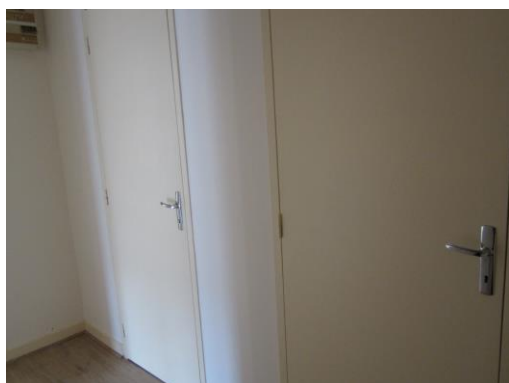


## Logement rénové Rue de la Mairie

*Figure 1-Entrée-enfilade*



*Figure 2-Entrée*



*Figure 3-Entrée-Placard1*



*Figure 4-Entrée-Placard2*



*Figure 5-Chambre*



Figure 6-Séjour-cuisine



Figure 7-Séjour

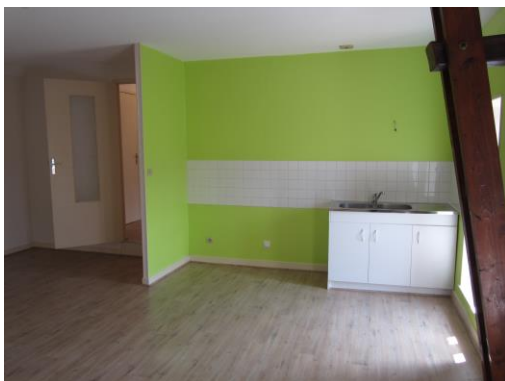


Figure 8-Séjour-fenêtres



*Figure 9-Salle de bain 1*



*Figure 10-Salle de bain2*



*Figure 11-Salle de bain3*



*Figure 12-Chauffe-eau*



*Figure 13-WC*



*Figure 14-Placard*



*Figure 15-Extérieur Bâtiment*



*Figure 16-Cour commune*

